

Thank You Kathryn!

In September, we said goodbye to Kathryn, our interim manager at Merle Boddy House. During her six month contract, Kathryn was a real asset to the management team and was so well liked by everyone here at Mid Norfolk Mencap! We will really miss having her around.



We bought her this lovely bouquet to thank her for all her hard work over the last few months. Everyone was very sad to see her go.

Thank you Kathryn! We wish you the best of luck in your next role.



October 2025



Welcome

We are pleased to welcome two new Support Workers to our Community Outreach team – **Becky** and **Ebony**!

Their enthusiasm and dedication will help us continue providing the best possible support for adults with learning disabilities to live fulfilling and independent lives.



Becky



Ebony

Please join us in giving them a very warm welcome as they settle into their new roles!

A Message from Our Chair

September always feels like a month of change, both because it is the month to get back to school and also as summer turns to autumn. So for us too, September has turned out to be a month of big and unexpected change.

It was with a huge amount of sadness and frustration that in September, we had to acknowledge that despite everyone's efforts and care, Merle Boddy House has to close. The building simply does not provide the sort of facilities that we need to provide for our residents today. We looked closely at how we might change this, but it would be far too expensive - and far too disruptive for the people living there - for these changes to be made while people are living there. The decision to close Merle Boddy House was not taken lightly and is not a reflection on the care provided by the team there. By taking this decision now, we have been able to make sure that the people who live at Merle Boddy House can be fully and properly supported as they find new places to live. And the people who work at Merle Boddy House can continue to support our residents over this period, and be redeployed where possible in the organisation.

I know that many members and people we support will be upset by this news. It is my sincere hope that by making this decision now, we will be able to properly and carefully close Merle Boddy House in a supportive way, rather than in a way which reacts to other circumstances. By focusing on delivering excellence across the whole of our organisation and services we hope in time to support many more people with learning disabilities, and their families, across Norfolk.

Our intentions are one thing. The practical outcome for people is another. If you have any questions or observations to bring to my attention please feel free to email me at chair@midnorfolkmenca.org

Finally, the board has also had a big change this month, as Richard Grout stepped down as trustee. Richard has been involved with Mid Norfolk Mencap for years, a real stalwart for the organisation and so I am really pleased that while he has stepped down from his formal duties he will continue to participate in the board as an Associate Member.

As I thank Richard for all that he has done for the organisation over years past, I also extend my thanks to the whole Mid Norfolk Mencap team in helping us move forward.

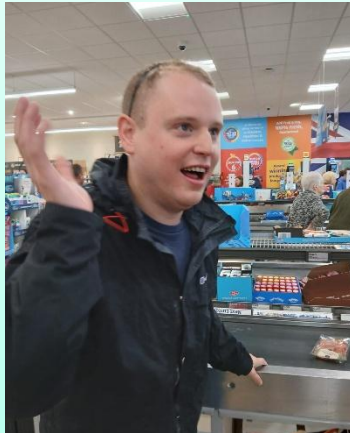
Sarah

Chair - Board of Trustees

What's been going on in the Community Outreach Support service?

This month, Danny enjoyed making pizza pinwheels – from choosing ingredients, paying for them at the till, preparing them, and tidying up the kitchen afterwards.

This was a brilliant way to help develop independence skills.



John recently went crabbing in Wells. It was his first time going to Wells, and crabbing, and he absolutely loved the experience!



What's been going on in the Community Outreach Support service?

Kevin has been continuing to volunteer at PACT Animal Sanctuary each week, where he helps to look after all the animals, clean their enclosures, and help with maintenance.



He saw that there was a notice at the Sanctuary asking for toilet roll tubes for small animals to play and nest in, so last time he went in to volunteer, he brought in lots of tubes that he'd been collecting!



When an East Anglian Air Ambulance landed in Dereham, Bogdan and Jade were able to see the helicopter up close and chat with some of the crew. Getting to see it land and take off again was amazing!

They then went up to Norwich and walked alpacas, which were so cute! Jade and Bogdan also completed the safari trail around Norwich and took lots of photos.



What's been going on in the Community Outreach Support service?

Gavin was tasked with servicing Mid Norfolk Mencap's fishing rods ahead of a fishing trip at the coast. Gavin and Alfie had both never been fishing before, but they quickly learned and are eager to give it another go in the future!



William had a trip to Banham Zoo, where he saw lots of different animals, and got to ride the Safari train!



Lawrence and Alfie helped to maintain our allotment and make sure all the plants were watered or harvested...

...Before relaxing with a few games of snooker!



What's been going on in the Community Outreach Support service?

There have been lots more days out and activities run over the last month by our amazing staff team, including...



Arts and crafts activities



Cooking new and healthy meals



Going to the gym



A day out in Norwich



Sewing

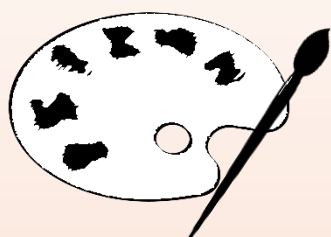


Meeting some donkeys



Mini golf

Dereham & District Gateway Club



**Arts &
Crafts**

**Oct
3**



**Music
Club**

**Oct
10**



**Club
Night**

**Oct
17**



**Halloween
Themed
Bingo**

**Oct
24**



Also includes seasonal arts
& crafts and topical quizzes



7pm – 9pm
At the Meeting Point
4 St. Withburga Lane
Dereham
NR19 1ED



£3.00 entry
(Plus money for
refreshments and
raffle)



NORFOLK LEARNING DISABILITY PARTNERSHIP

www.norfolkldpartnership.org.uk

Open to the public and can include:

- People with learning disabilities and their families / carers
- People who work at the County Council, including County Councillors
- People who provide services for people with learning disabilities
- People from the local area who want to help



SOUTH NORFOLK Locality Meeting

Next meeting:

Wednesday 3rd December 2025,
1.30pm-3pm

Venue:

Dereham Community Hub
(Independence Matters)
1 Rashes Green, Dereham, NR19 1JG

WEST NORFOLK Locality Meeting

Next meeting:

Thursday 27th November 2025,
1.30pm-3pm

Venue:

Forward 33 Shop,
33 Broad Street,
Kings Lynn, PE30 1DP

NORTH NORFOLK Locality Meeting

Next meeting:

Wednesday 19th November 2025,
1.30pm-3pm

Venue:

About With Friends
22D Holt Road, Cromer, NR27 9JW

NORWICH Locality Meeting

Next meeting:

Wednesday 12th November 2025,
1pm-2:30pm

Venue:

Lazar House, Sprowston Road,
Norwich, NR3 4HX



Follow us on Facebook for news, updates,
photos and stories as they happen.
Search 'Mid Norfolk Mencap' or use this
QR code.



Produced by MID NORFOLK MENCAP

1a Tavern Lane, Dereham, Norfolk NR19 1PX

Telephone: 01362 693013

Email: info@midnorfolkmenca.org

Website: www.midnorfolkmenca.org

Registered Charity No. 1049364

Registered Company No. 2992726